

窗口式抽氣扇 VENTILATING FAN

型號 MODEL :

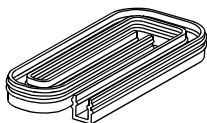
V-15SL□, V-20SL□

使用說明書 INSTRUCTION MANUAL

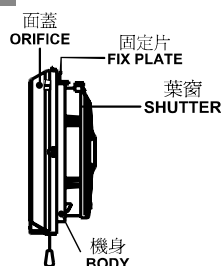
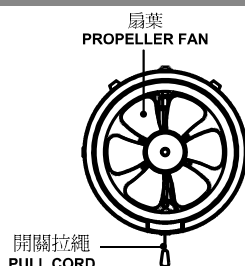
產品外觀 / PRODUCT APPEARANCE

附件：密封墊圈 1 個

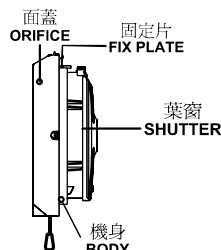
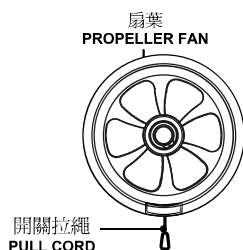
**ATTACHMENT/
PACKING CUSHION 1 PC**



V-15SL□



V-20SL□



註：□ 及生產年份的代表字母

REMARK：□ IS THE ALPHABET OF DEVELOPEMENT NUMBER

說明書可在網頁上查閱：

Instruction manuals are available on the company website :

Singapore <https://www.mitsubishielectric.com.sg>

Malaysia <http://www.mitsubishielectricmalaysia.com>

Australia <http://www.mitsubishielectric.com.au>

Hong Kong <http://hk.mitsubishielectric.com>

Brunei <http://www.tskelectric.com>

New Zealand <https://www.bdt.co.nz/home>

安裝及操作前，請先細閱本說明書，以確保安全。

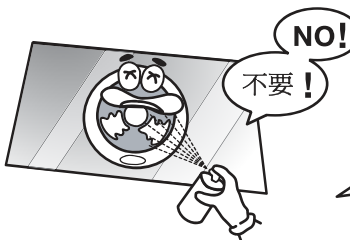
FOR SAFETY, PLEASE READ THIS MANUAL PRIOR TO INSTALL AND OPERATION

1. ⚠ 注意事項 / CAUTION



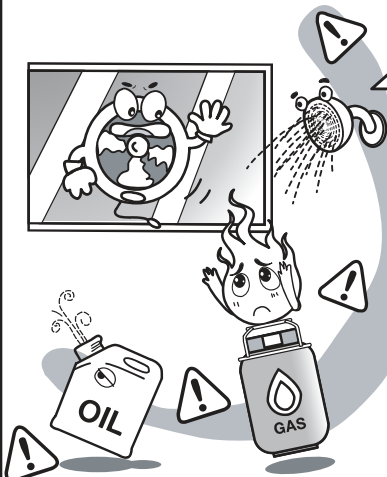
1. 當扇葉轉動時，切勿將手指或其他物件觸碰扇葉，否則可能損害扇葉 或引致受傷。

1. Do not insert fingers or anything into the ventilating fan while the propeller is rotating because propeller might be damaged and injury may result.



2. 請勿在本機上使用任何噴霧劑，否則塑料零部件可能受損或變形。

2. Do not apply any kind of spray.
Otherwise. The plastic parts might be damaged or deformed.



3. 請勿在下列環境中使用本機：

- 室溫高於 40°C
- 濕氣極重、靠近火種或潮濕處的地方
- 放置大量燃油、化學品或滿佈灰塵的地方
- 抽氣扇的入風口靠近氣體排氣管或其他明火設備

3. Do not use the fan in:

- Room temperature over 40°C
- Very humid area. Near fire or wet area.
- Area containing high amount of oil, chemical, dust
- The air-intake of the ventilating fan is near open flue of gas or other open fire appliances.

4. 若長期不用本機，請 從電源插座拔出插頭。

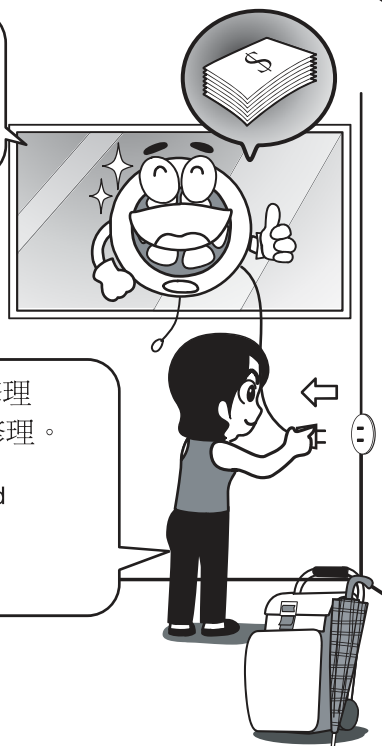
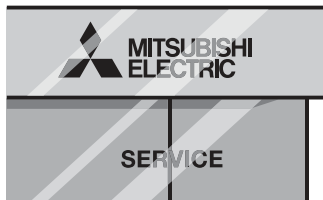
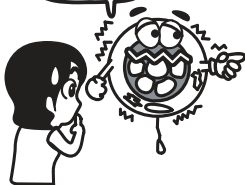
4. Disconnect the power plug from the receptacle when the ventilating fan isn't use for a long period of time.

5. 若無法啓動抽氣扇或電源線受損，不應自行修理，必須送交三 菱電機經銷商或維修服 務中心修理。

5. If the ventilating fan can't switch on, or the supply cord is damaged it must only be repair by your MITSUBISHI ELECTRIC dealer or service center.

Go There please

去那裡吧



安全須知 / ESSENTIAL SAFETY PRECAUTION

SAFETY INSTRUCTION / 安全指引

1. Disassembly and repair should not be done unless carrying by a specialized technician (cause of fire, electric shock and injury). Please consult your MITSUBISHI ELECTRIC dealer or service center.
 2. The product should not expose to water or get wet by pouring water on (cause of short circuit and electric shock).
 3. Disconnect the power or break the cutout on board when cleaning is required, and do not pull its plug with wet hand (cause of electric shock and injury).
-
1. 不論任何情況，不應對產品進行修改，產品拆卸及維修必須交由專業技術人員負責（以免引起火警、觸電或受傷）。如有疑問，請向三菱電機經銷商或維修服務中心查詢。
 2. 不應讓本機沾水，或被水潑濕（以免引致短路或觸電）。
 3. 需要清潔時，請先切斷電源或關上保險開關掣。切勿以沾濕的手拔除插頭（以免觸電或受傷）。

CAUTION / 注意事項

1. The ventilating fan should not be installed in high humidity area because electric shock or injury may result.
2. Power supply should not exceed rated voltage.
3. The ventilating fan should not be used in where is inflammable area that may cause fire.
4. Please check the assembly parts before and after installation.
5. Please observe technique of wire installation and regulation of interior wiring (poor connecting and fault wiring may cause danger of fire).
6. When it shall not be operated for a long time, please disconnect the plug or break the cutout on board.
7. Do not use the fan in the back flow of gases into the room.
8. This appliance is not intended for use by persons (including children) with reduced physical, sensory or mental capabilities, or lack of experience and knowledge, unless they have been given supervision or instruction concerning use of the appliance by a person responsible for their safety.
9. Children should be supervised to ensure that do not play with the appliance.
10. If the ventilating fan can't operate or the supply cord is damaged, it must only be repaired by your **MITSUBISHI ELECTRIC** dealer or service center.
11. The ventilating fan is to be supplied through a residual current device (RCD) having a rated residual operating current not exceeding 30mA
The RCD sample such as ELCB(Earth-leakage circuit breaker)

1. 本抽氣扇不應安裝於極度潮濕的地方，否則可能引致觸電或受傷。
2. 電源供應不得超過額定電壓。
3. 不應在易燃地方使用本抽氣扇，否則可能引起火警。
4. 安裝前後，請檢查各個裝配件。
5. 安裝時請遵照電線安裝方法及室內電線安裝守則（若電線接駁不善或接駁錯誤均可能引起火警）。
6. 若長期不用本機，請拔除電源插頭，或在配電盤切斷電流。
7. 不要把抽氣扇作為把氣體引入房間之用。
8. 此電器不是設計為以下人士(包括兒童)使用：體能、知覺或精神有障礙人士，又或欠缺知識及經驗人士。
以上人士需得到其監護人的指導及監督，才可使用此電器，以保障其安全。
9. 兒童需受到監管以確保其不會玩弄此電器。
10. 若無法啟動抽氣扇或電源線受損，不應自行修理，
必須送交三菱電機經銷商或維修服務中心修理。
11. 通過剩餘電流裝置（RCD）供電，浪湧電流保護在30mA以下
漏電斷路器等剩餘電流裝置（RCD）

特殊環境 / SPECIAL ENVIRONMENT

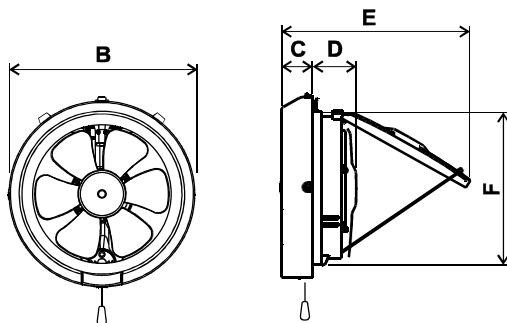
可能令抽氣扇壽命縮短的地方包括：接近泉水或海邊的地方、製藥廠，以及塵埃及難聞氣體充斥的地方，例如家禽養殖場、養豬場等。

Places where service life of ventilating fan may shorten are:

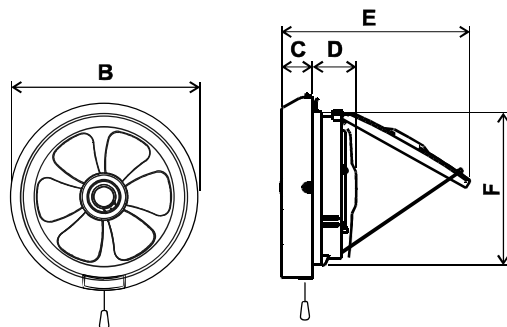
Fountain, Sea shore, Pharmaceutical factory, Excessive dust and gases areas such as poultry or pig farm

2. 外形尺寸 / OUTSIDE DIMENSION

V-15SL□



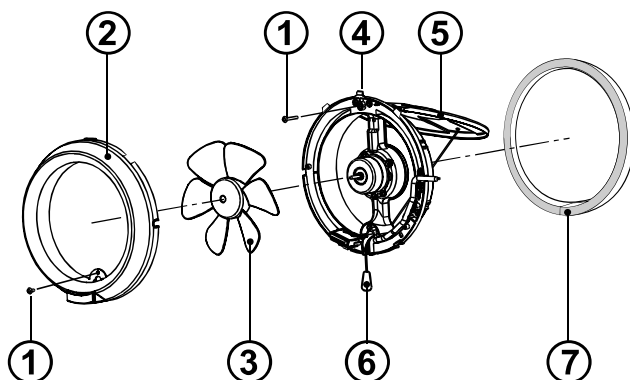
V-20SL□



型號 MODEL	A	B	C	D	E	F
V-15SL□	150	210	43	53	206	178
V-20SL□	200	276	45	63	300	237

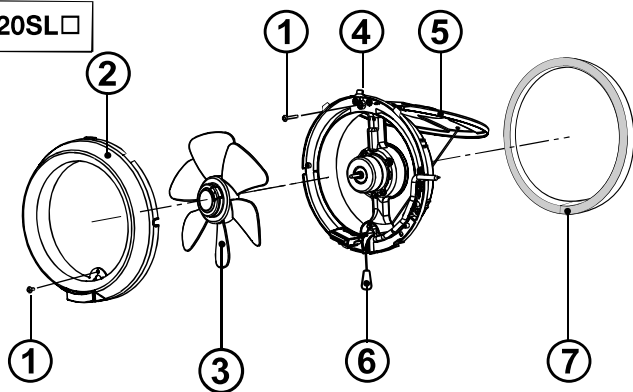
單位：毫米
UNIT: mm.

V-15SL□



- ① 螺絲
SCREW
- ② 面蓋
ORIFICE
- ③ 扇葉
PROPELLER FAN
- ④ 固定片
FIX PLATE
- ⑤ 葉窗
SHUTTER
- ⑥ 開關拉繩
PULL CORD
- ⑦ 密封墊圈
PACKING CUSHION

V-20SL□

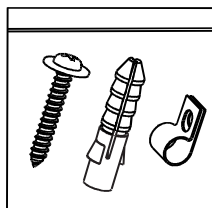
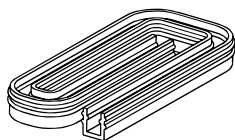


- ① 螺絲
SCREW
- ② 面蓋
ORIFICE
- ③ 扇葉
PROPELLER FAN
- ④ 固定片
FIX PLATE
- ⑤ 葉窗
SHUTTER
- ⑥ 開關拉繩
PULL CORD
- ⑦ 密封墊圈
PACKING CUSHION

Accessory Parts/ 配件

PACKING CUSHION 1 PC

密封墊圈 1 個



- Washer Screw 4x25mm. 1 Pc
墊圈螺絲4x25毫米 1個
- Plastic Anchor No.7 1 Pc
7號塑膠塞 1個
- Cord clip 1 Pc
線夾 1個

3. 安裝方法 / INSTALLATION

安裝前注意事項：

1. 安裝本抽氣扇的地方，其室溫不應高於 40℃。
2. 本抽氣扇不應沾水，或安裝於極度潮濕的地方，否則可能引致觸電或受傷。
3. 請勿把本抽氣扇安裝於天花上，否則可能導致馬達漏出機油。
4. 請勿把本抽氣扇安裝於可活動的窗戶上。
5. 請勿把本抽氣扇安裝於可導電物料上，
例如：銅片、電線等，否則一旦漏電可能會引起火花。
6. 建議把本抽氣扇安裝於離地面2.3米之處，以避免觸碰扇葉。
7. 本抽氣扇可供安裝於向外窗戶或牆壁上。

INSTALLATION PRECAUTION

1. Install the ventilating fan in a room temperature that is not over 40℃.
2. The ventilating fan should not expose to water or very humid area because electric shock or injury may result.
3. Do not install the ventilating fan on the ceiling because the motor oil may leakage from the motor.
4. Do not install the ventilating fan on a movable window.

- Do not install the ventilating fan on a conductive material such as copper plate, wire, etc.
because spark can occur in case of electrical leakage.
- To prevent the contact with the blade, install the ventilating fan above 2.3 m from the floor.
- The fan is capable to mount in outside windows or walls.

本機安裝程序

INSTALLATION THE BODY

- 如圖1所示，在玻璃上切割洞孔。
1. Make a hole in the glass, referring to the figure 1.

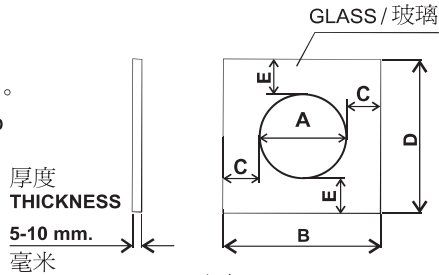


Fig. 1/ 圖 1

型號 MODEL	A	B	C	D	E
V-15SL□	186-188	More than / 大於 250	More than / 大於 31	More than / 大於 390	More than / 大於 101
V-20SL□	247-250	More than / 大於 320	More than / 大於 35	More than / 大於 450	More than / 大於 100

單位:毫米 / UNIT : mm.

Remark : model which is spring fix plate should not install in thickness over 7 mm. sheet glass.

註:若型號屬彈簧固定類型,不應安裝在超過7毫米的玻璃上。

- 如圖2所示，在玻璃洞孔邊緣套上密封墊圈。
2. Fit the Packing Cushion over the glass edge, referring to the figure 2.

Fig. 2/ 圖 2

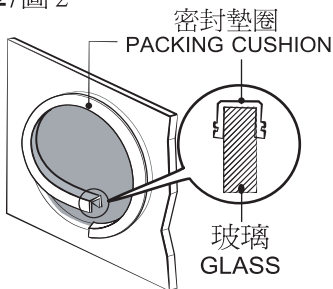
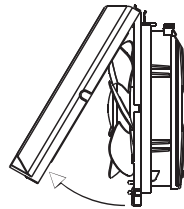


Fig. 3/ 圖 3



- 如圖 3 所示，拆除機身面蓋。
(有關拆除面蓋的詳細方法，請參閱第四部分「保養方法」。)
3. Remove the Orifice from the Body, referring to the figure 3.
(Detail how to remove the Orifice on item 10 maintenance procedure).

4. 如圖 10 所示，鬆開固定片上的螺絲。

4. Untighten a screw on the Fix Plate, referring to the figure 4.

5. 如圖 5 所示，把機身慢慢套進密封墊圈內。

5. Slowly fit the Body on the Packing Cushion, referring to the figure 5.

Fig. 4 / 圖 4

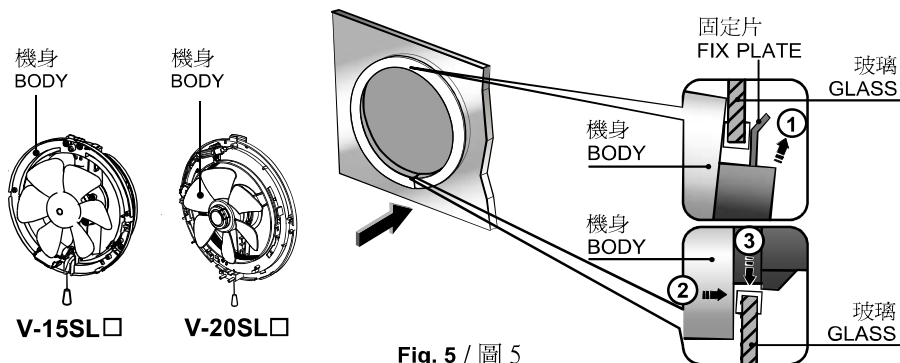
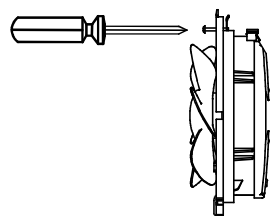


Fig. 5 / 圖 5

6. 將電源線固定在線夾上，然後將線夾上的螺絲擰緊到牆上。

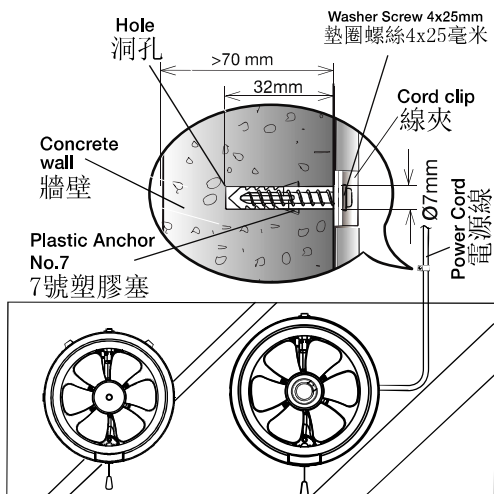
這必須可以承托風扇重量至少16千克。

例如混凝土牆或厚度超過 30 毫米的木牆或其他結構。

6. Fixing the power cord into cord clip, then tighten a screw on cord clip to the wall

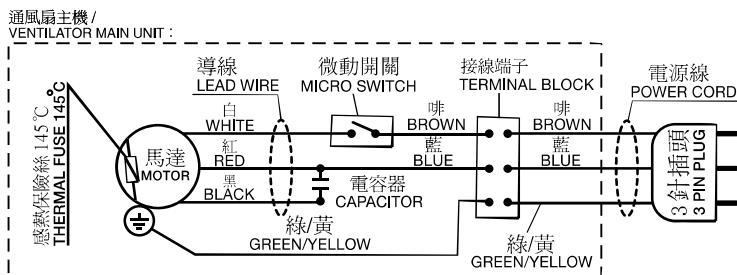
that is strong enough to hold the fan weight at least 16 kg.

such as a concrete wall or a wood wall thicker than 30 mm. or another structure which strong enough.



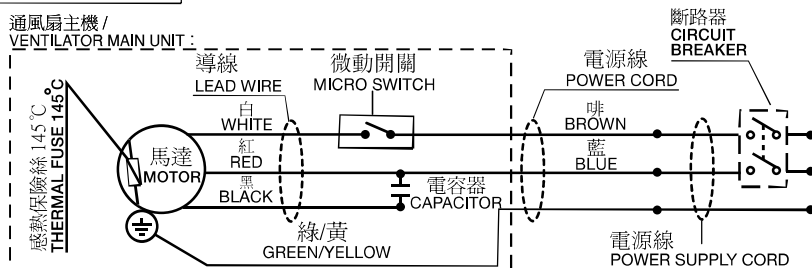
型號連插頭 MODEL WITH PLUG

接線圖 / CONNECTION DIAGRAM



型號連電源線 MODEL WITH POWER CORD

接線圖 / CONNECTION DIAGRAM



安裝用的電源線尺寸 / Power supply cord size for installation

1. 必須使用室內接線用的 1.5 mm^2 或 2.5 mm^2 VAF 電線。
2. 若要安裝地線，必須使用最少 1.0 mm^2 的地線，並須由專業技術人員連接至接地棒。

1. Must use indoor wiring VAF cable 1.5 mm^2 or 2.5 mm^2
2. In case of install ground wiring must install ground at least 1.0 mm^2 and must install to Industrial Standard Ground Rod by specialized technician.

備註 / Remark:

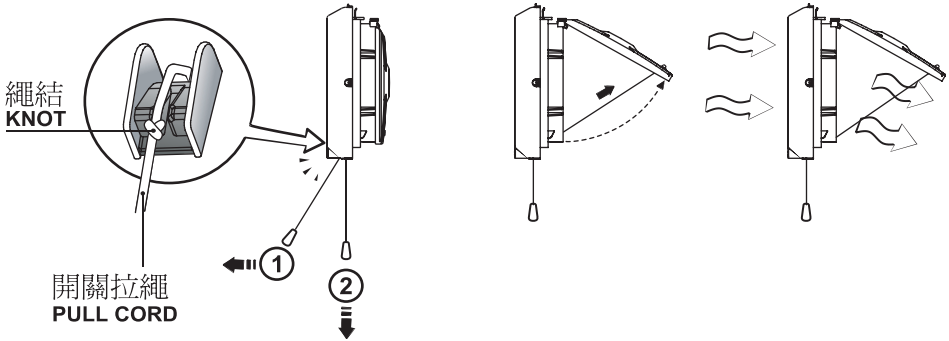
1. 斷路器應安裝於方便操作及關閉的位置。
 2. 斷路器各接線端子應有接點間隔，並按接線規定在第三類電壓過高情況下全面切斷電源。
1. Installation location of circuit breaker should be easy to operation and shut off.
 2. The circuit breaker shall have a contact separation in all poles and provide full disconnection under overvoltage category III condition in accordance with the wiring rules.

4. 操作方法 / OPERATION

1. 開機：如圖 6 所示，拉動開關拉繩約5毫米，以打開葉窗並啓動抽氣扇。

1. Switch on : Pull the pulling cord about 5 mm. for opening the Shutter referring to the figure 6. The ventilating fan will be turned on.

Fig. 6 / 圖 6



2. 關機：拉動開關拉繩，直至拉繩上的繩結被卡住，葉窗隨即閉上，而抽氣扇亦會關掉。

2. Switch off : Pull the pulling cord until it get hold in the gap on the Body. The Shutter will be closed so the ventilating fan is turned off.

5. 保養方法 / MAINTENANCE

零部件拆除方法：

REMOVING THE PARTS :

- 拆除面蓋
- Removing Orifice

面蓋：▶ 鬆開面蓋下方的螺絲

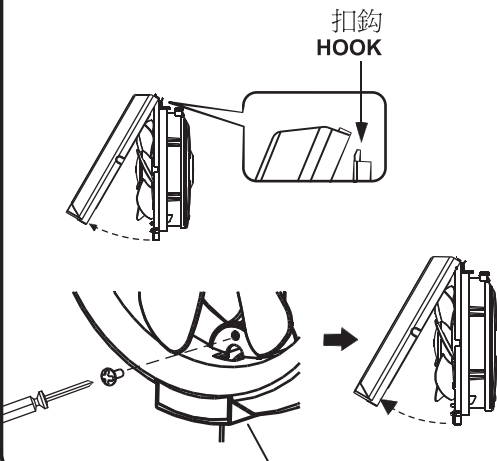
▶ 由下方開始揭開面蓋。

▶ 把面蓋自頂部的扣鉤卸下來。

Orifice：▶ Untight a screw on the orifice at a bottom

▶ Disassembly the orifice at a bottom first

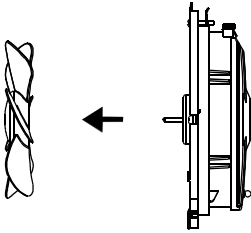
▶ Remove the orifice from the body hook at a top



5. 保養方法 / MAINTENANCE

- 拆除扇葉
- Removing Propeller fan

(4.1) V-15SL□

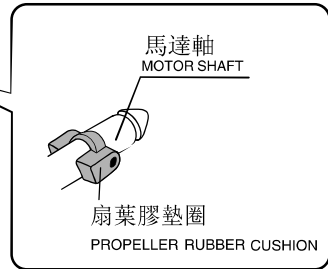
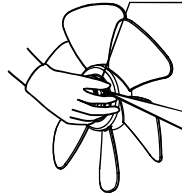


(4.2) V-20SL□

把扇葉沿著馬達軸一直
推至發出咔一聲

Push the Propeller's dome and
move along the Motor shaft
untill there is "click" sound.

解鎖按鈕
UNLOCKED-BUTTON



扇葉：小心地把扇葉從馬達回轉軸拆下來，以免扇葉受損。

Propeller fan : Disassembly the propeller fan from a motor rotor shaft carefully because propeller fan might be damaged.

清潔方法：

1. 清潔前，謹記先拔除電源插頭。
2. 確保不要把通電的零部件沾濕。
3. 切勿使用汽油、稀釋劑、拋光劑、酒精、苯、噴霧劑或含化學成分的抹布清潔塑料零部件。
4. 要清潔扇葉或機身，請用浸過溫水或溫和清潔劑的軟布拭抹，再用軟布抹乾。

CLEANING PROCEDURE :

1. Always unplug the power cord before cleaning.
2. Be sure to keep electrical parts away from water.
3. Do not use gasoline, thinner, polish, alcohol, benzene, spray or chemical cloth to clean plastic parts.
4. To clean the propeller and body, use soft cloth to soak in a warm water or mild detergent, then wipe dry with soft cloth.

6. 規格 / SPECIFICATION

型號 / MODEL	V-15SL□	V-20SL□
速率電壓和頻率 Rated Voltage & Frequency	220 - 240 V ~ 50 Hz	
額定電流 (A) Rated Current (A)	0.04	0.065-0.08
額定功耗 (W) Rated Power Consumption (W)	8-9.4	13-16
額定轉速 (RPM) Rated Speed Revolution (RPM)	1,550-1,740	1,280-1,350
空氣流量 (m³/ hr.) Air Delivery (m³/ hr.)	230-250	390-420
產品重量 (kg) Product Weight (kg)	1.1	1.2

註：產品規格如有更改，恕不另行通知。
Remark: Product specifications are subject to change without notice.